

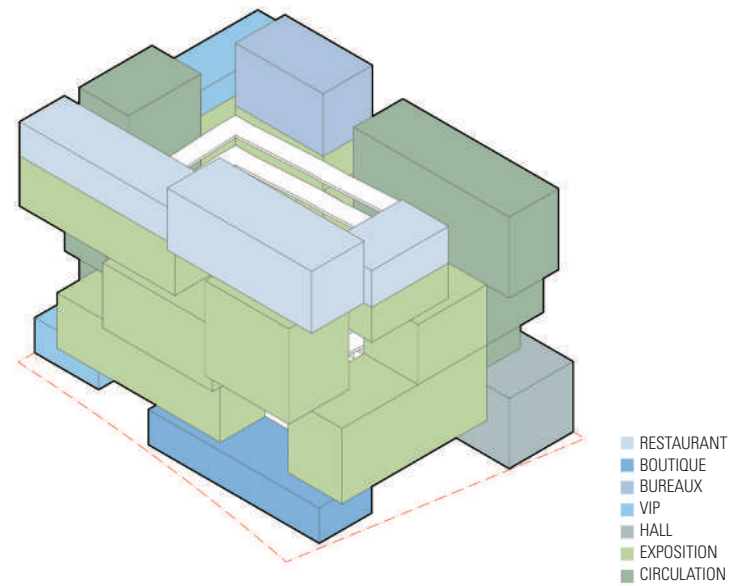
SITE PLAN

The Morocco Pavilion at the 2020 Expo in Dubai, designed by architects OUALALOU+CHOI, showcases how traditional Moroccan design and construction techniques can find new relevance in contemporary design and urban development efforts. One of the few buildings which will not be dismantled after the end of the world exposition, the Morocco Pavilion aims to push the technical and creative limits of traditional building materials to new heights. The Pavilion's 34-meter-high rammed earth façade is an ambitious technical feat pioneering in its advancement of rammed earth construction methods. Rammed earth, a traditional building material in Morocco, plays a key role in passively regulating indoor conditions in hot and arid places. To achieve the heights of the Morocco Pavilion's facade, raw and compacted rammed earth was formed into prefabricated panels coupled with a lightweight concrete frame. Its use in the Pavilion proves that it is a material at once traditional and innovative, offering an example of how traditional building methods can serve to inspire more sustainable models of urban development. Comprised of 22 stacked rectangular volumes visually resonant with vernacular rammed earth villages in Morocco, the Pavilion

encompasses 14 exhibition spaces, restaurants, shops, and offices. Visitors stroll along an inner 'street' composed of a ramp connecting all the exhibition spaces, an explicit reference to the experience of meandering through the medina. The Pavilion attempts to reduce the number of air-conditioned spaces to the bare minimum, utilizing passive strategies of climate control such as the thickness of the earthen walls, multiple vertical gardens, and the presence of a large central patio to naturally ventilate and cool the building. In line with this commitment to sustainability, after the conclusion of the 2020 Expo, the Pavilion will be converted into a housing complex, with existing facilities adapted into apartments and communal spaces.

**Location** Dubai, UAE **Program** Exhibitions, Food and Beverage (Traditional Moroccan Restaurant, Tea Room, Modern Street Food Area), Lounge, Event Space, Offices, Shop **Site area** 1,467m<sup>2</sup> **Gross floor area** 6,057m<sup>2</sup> **Principal architect** Tarik Oualalou, Linna Choi **Design team** Alia Ben Ammar(Site Architect), Daniel Larré(Project Architect), Daniele Pasin, Ava Violich, Chloé Zimmermann **Consultant** Earth Structures Group **PMC** Mace **Engineering** SETEC, e.construct **Façade engineer** TESS **Local architect** e.construct **Client** Kingdom of Morocco **Photographer** BOEGLY+GRAZIA **Editor** Jihui Choi

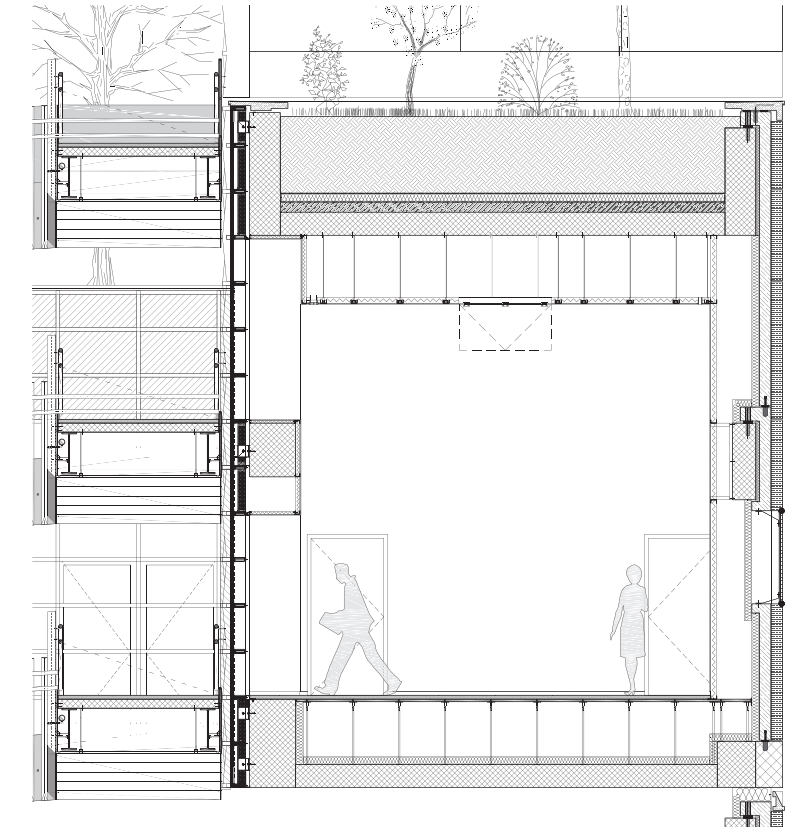




DIAGRAM



**QUALALOU + CHOI, TARIK OUALALOU, LINNA CHOI** OUALALOU + CHOI는 파리와 카사블랑카에 기반을 둔 건축가와 도시디자이너로 구성된 국제적인 건축사무소다. 2001년에 설립되어 주어진 조건을 탐구하고 건축가의 한계에 의문을 제기하며, 다른 문화와 맥락에 걸쳐 반항을 일으키는 작업을 하고 있다. Tarik Oualalaou는 공동설립자로, 파리-말라카이 대학에서 건축학을 전공하고 루브르 대학에서 미술사학, 파리국립미술원에서 토목공학 학위를 취득했다. 린나 최(Linna Choi)와 2017년에 '불복종의 영역(Territories of Disobedience)'을 출판했다. 린나 최는 이 사무소의 공동설립자로, 예일대학교와 하버드 디자인 대학원에서 건축학 학위를 취득했다. 라이스 디자인 얼라이언스 스포트라이트상을 포함하여 다수의 디자인상 수상 경력이 있으며, 한국건축가협회가 선정한 '올해의 건축가 100인'에 이름을 올렸다. [www.oplusc.com](http://www.oplusc.com)



DETAIL SECTION